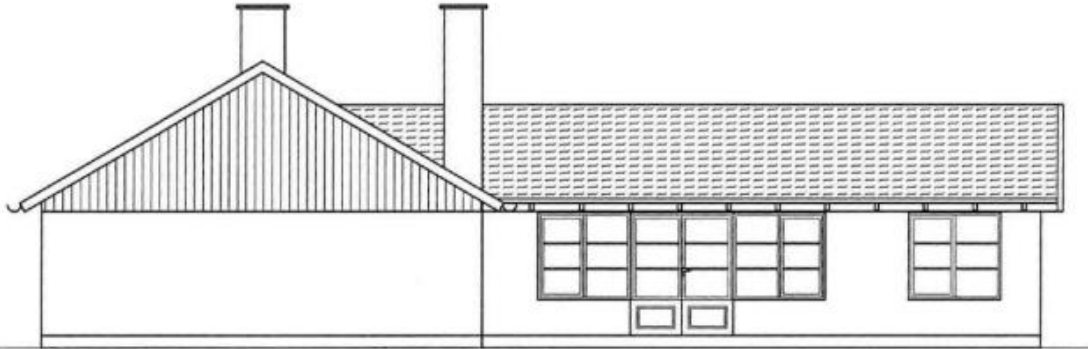


# Facader

Tilbygning og "make-over"

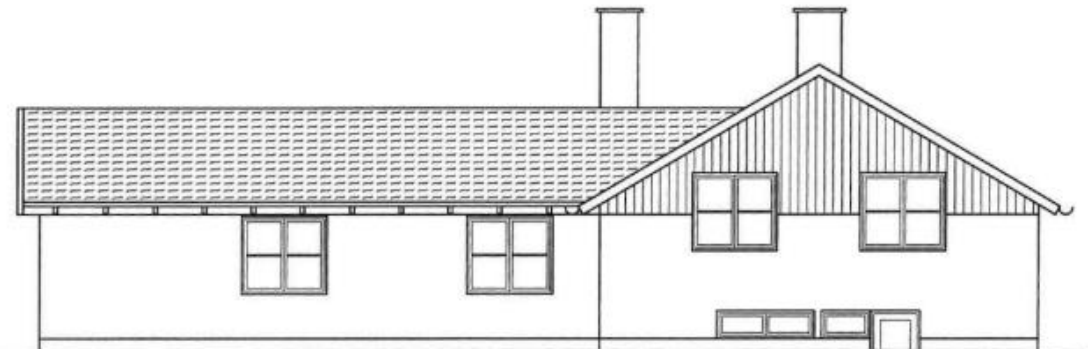
Borgmester Schneidersvej, Holte



Facade mod nord



Facade mod øst



Facade mod syd

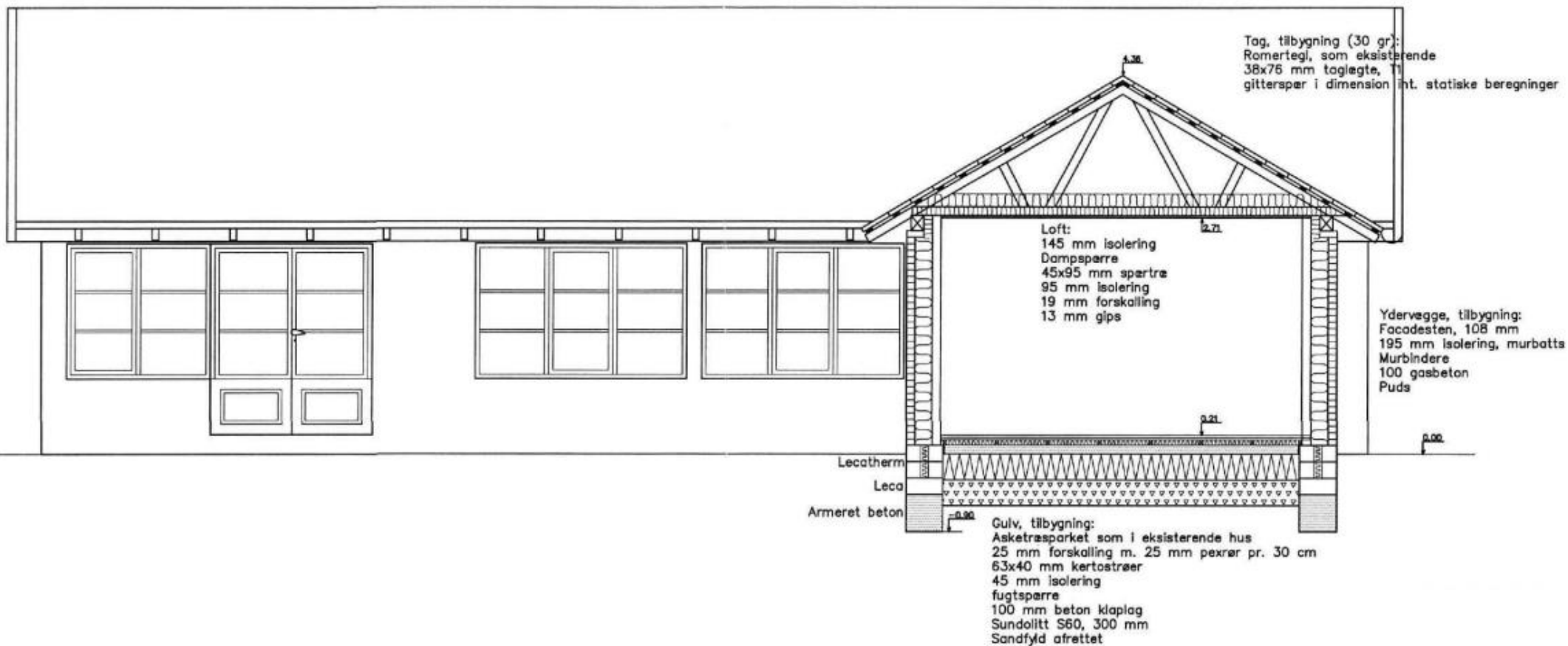


Facade mod vest

# Snit

Tilbygning og "make-over"

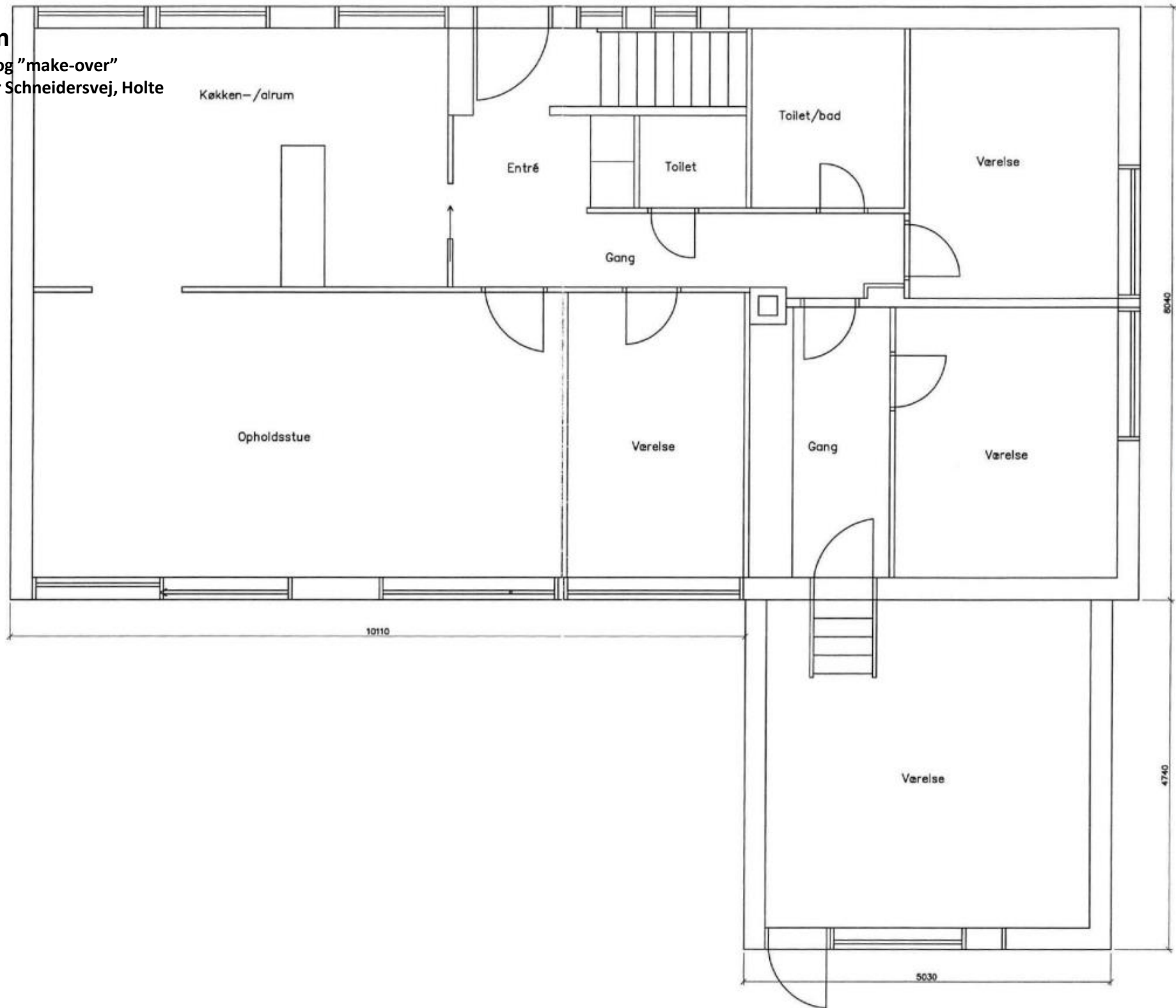
Borgmester Schneidersvej, Holte



# Stueplan

Tilbygning og "make-over"

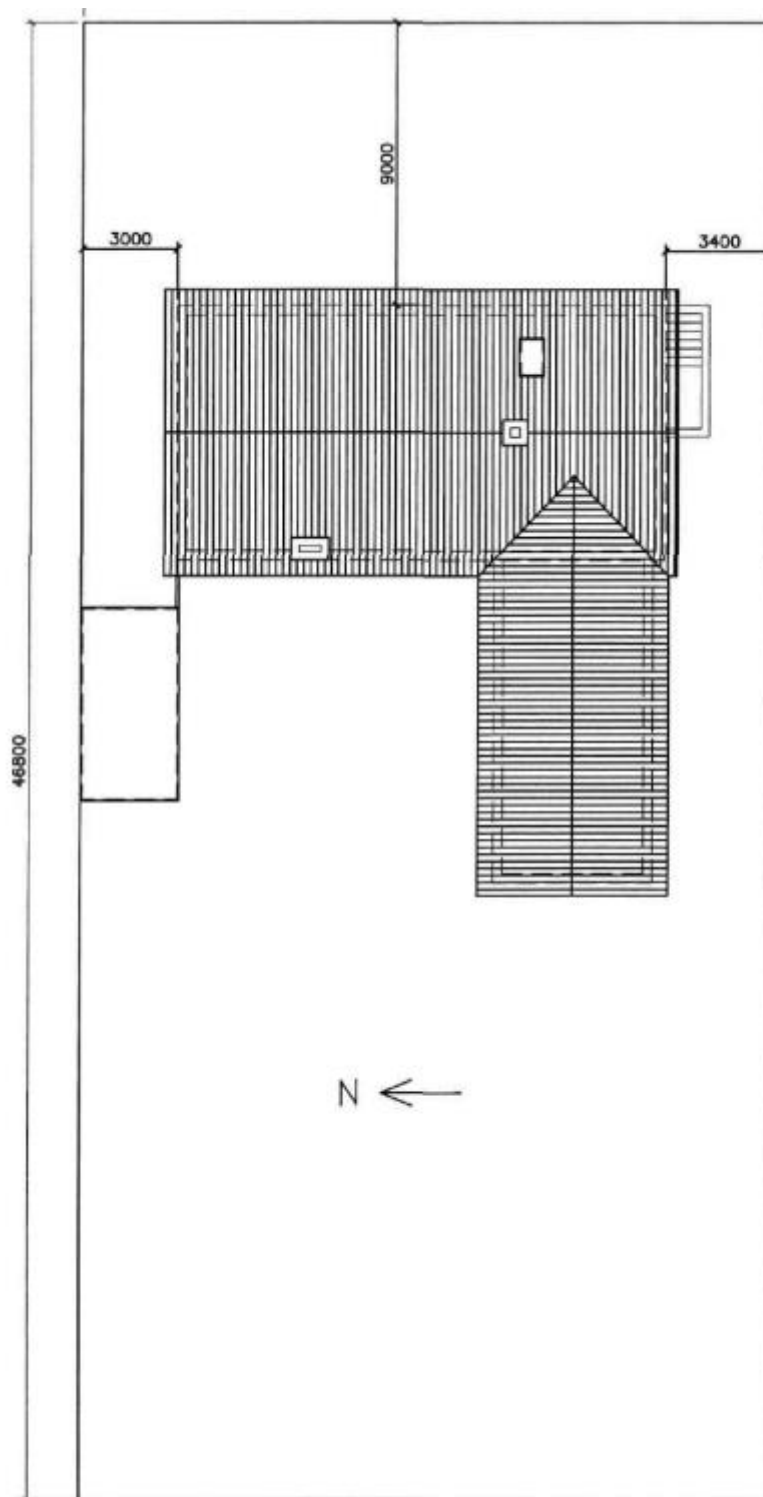
Borgmester Schneidersvej, Holte



# Situationsplan

Tilbygning og "make-over"

Borgmester Schneidersvej, Holte



## Note:

Alle mål er i mm

Grundareal=1025 m<sup>2</sup>

Eksisterende etageareal=149

Tilbygning=27,5 m<sup>2</sup>

Brutto etageareal=176,5 m<sup>2</sup>

Bebyggelsesprocent=17,2%

Carport, A=18 m