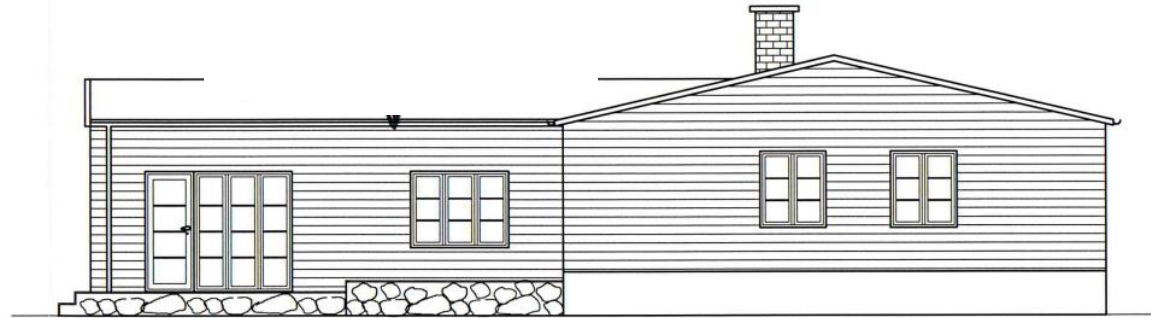




Facade mod nord



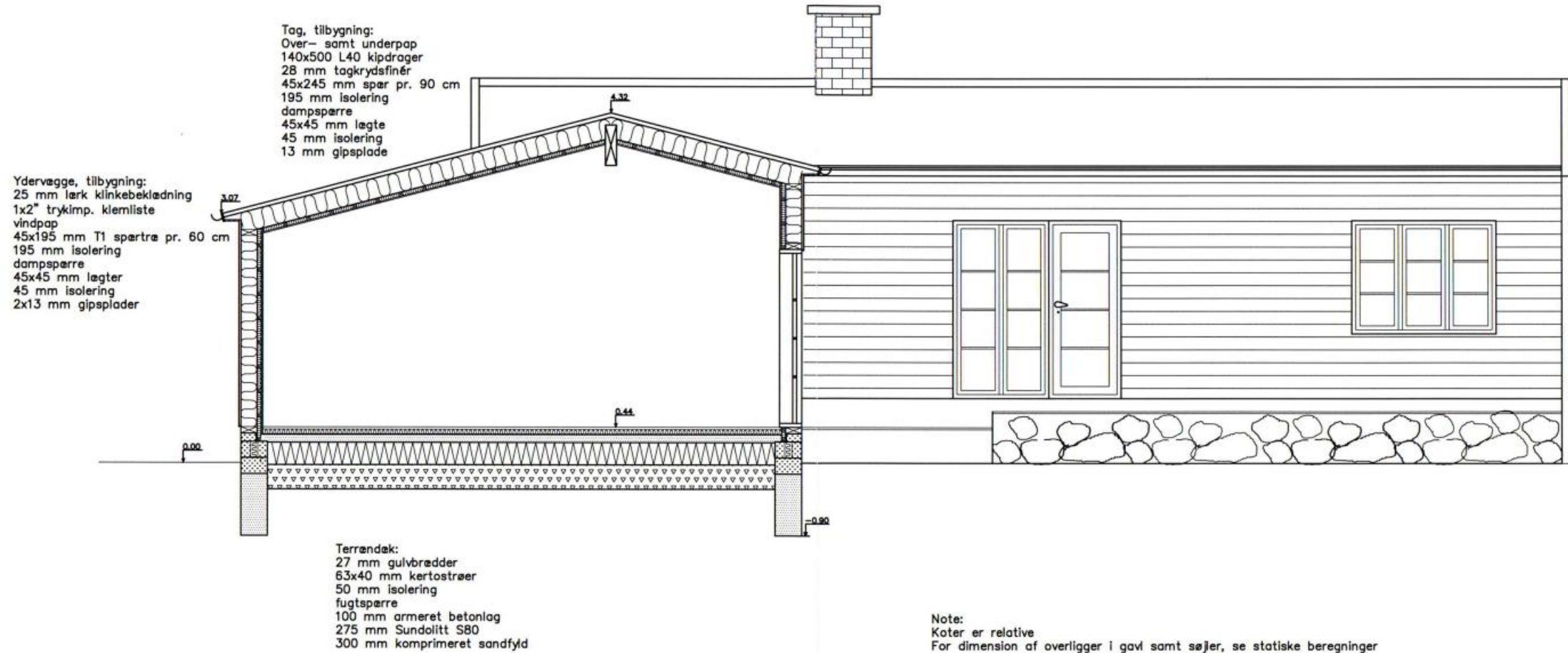
Facade mod øst

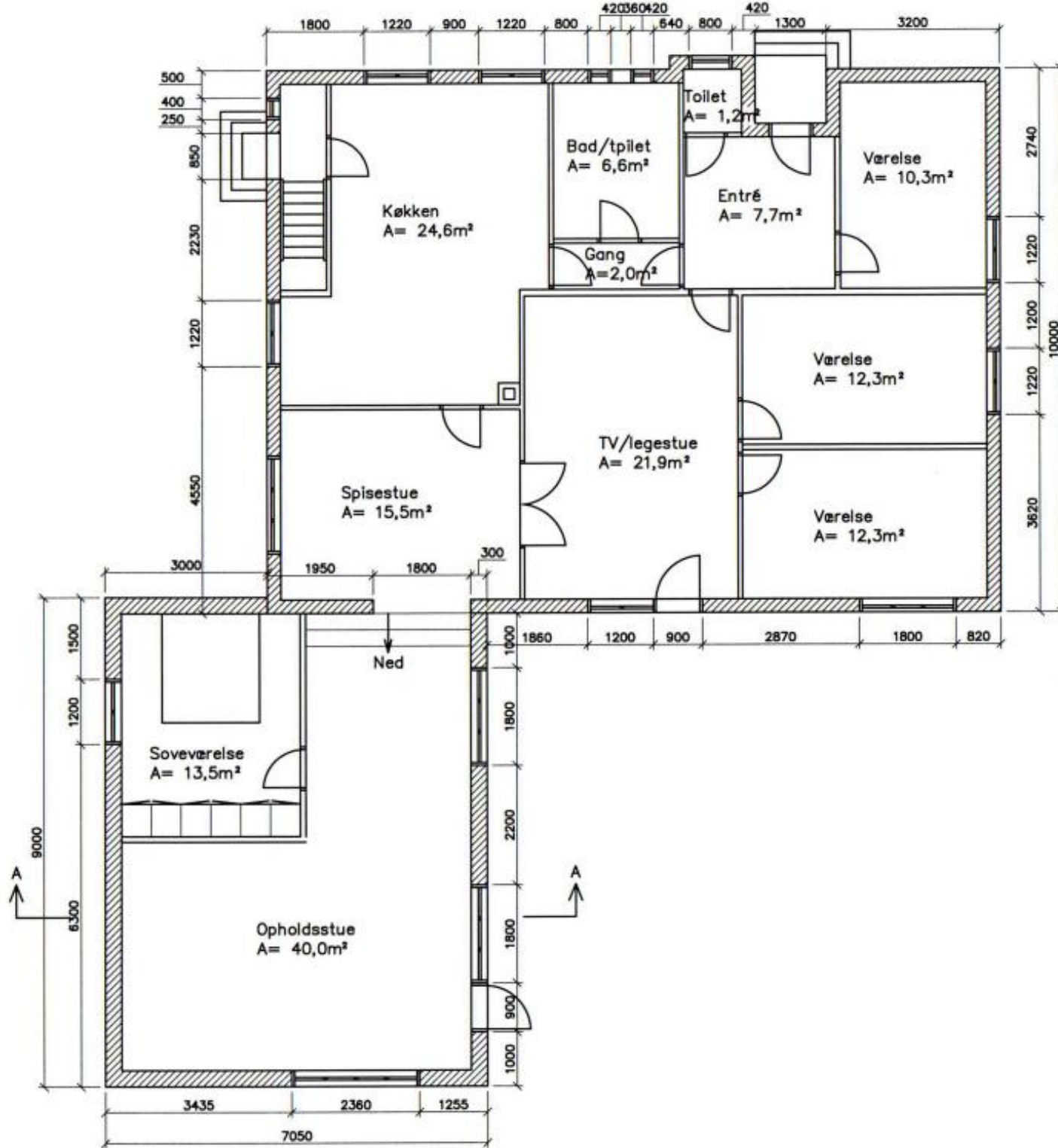


Facade mod syd

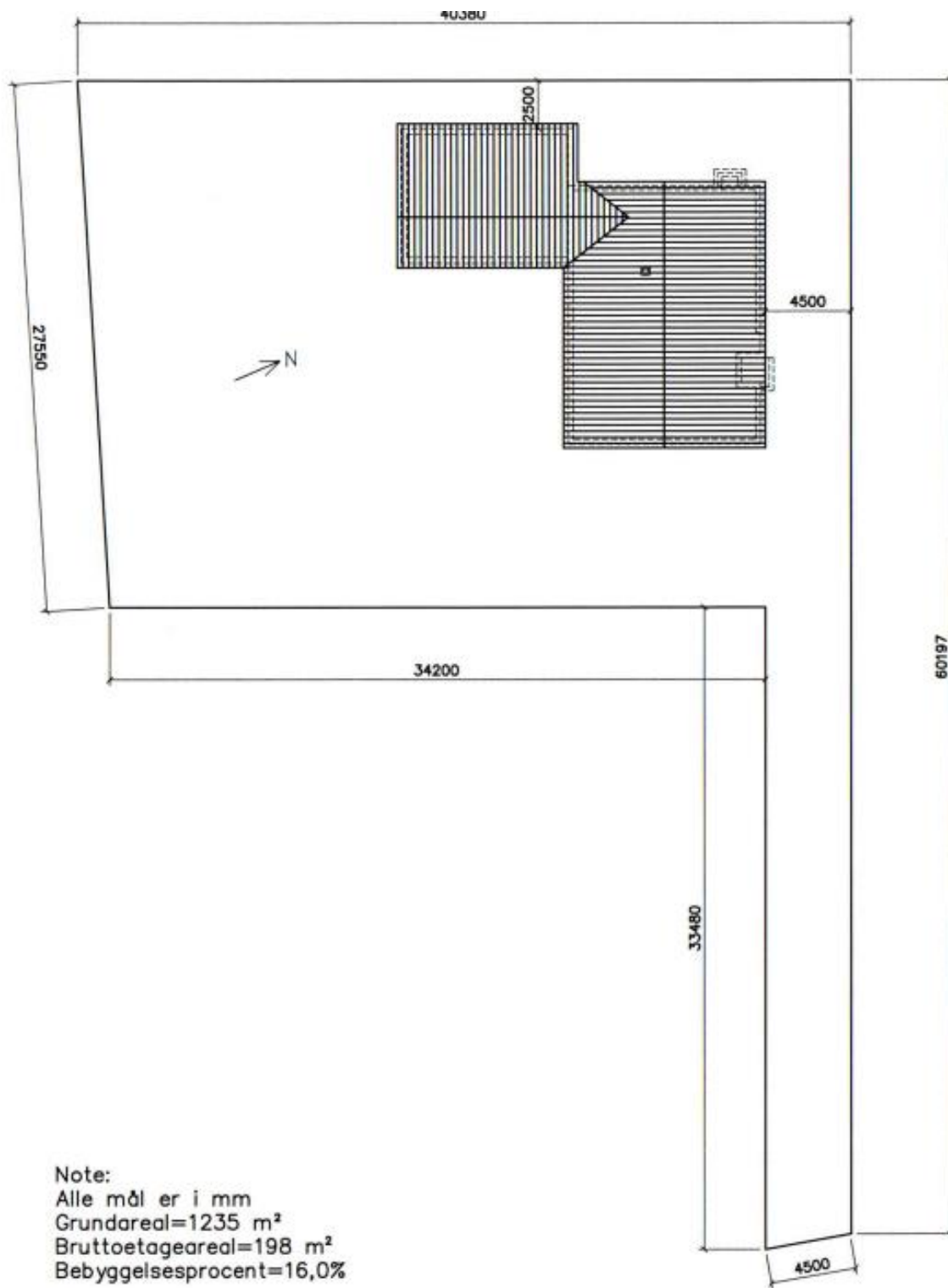


Facade mod vest

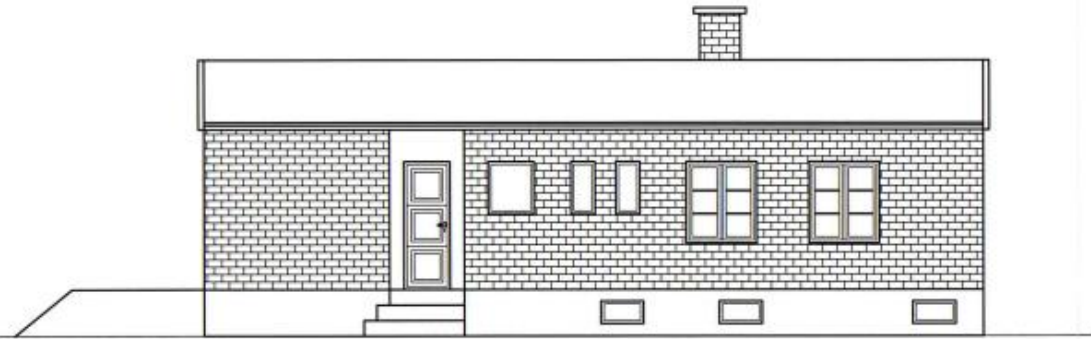




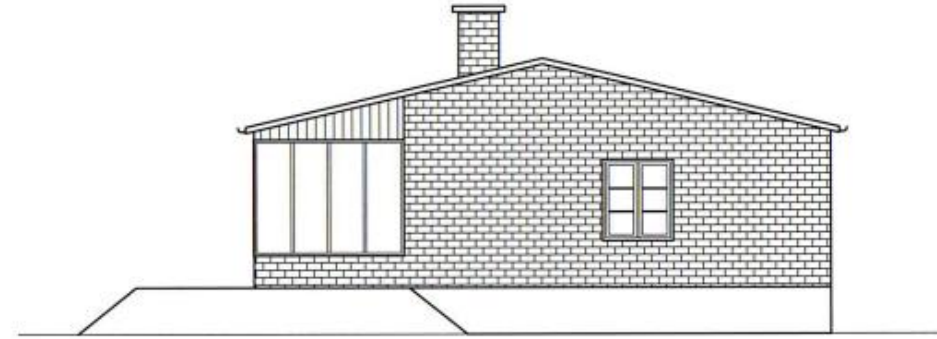
Stueplan
Tilbygning
Kastanievej, Holte



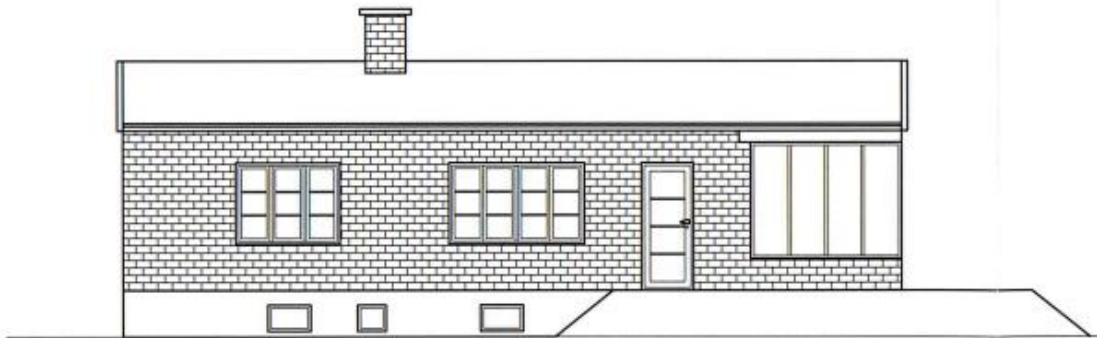
Note:
Alle mål er i mm
Grundareal=1235 m²
Bruttoetageareal=198 m²
Bebyggelsesprocent=16,0%



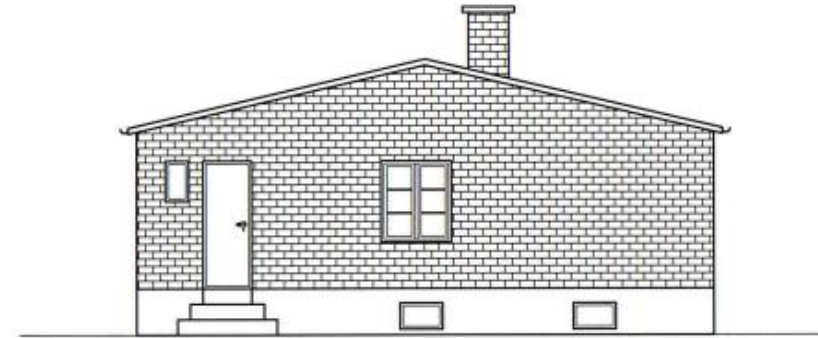
Facade mod nord



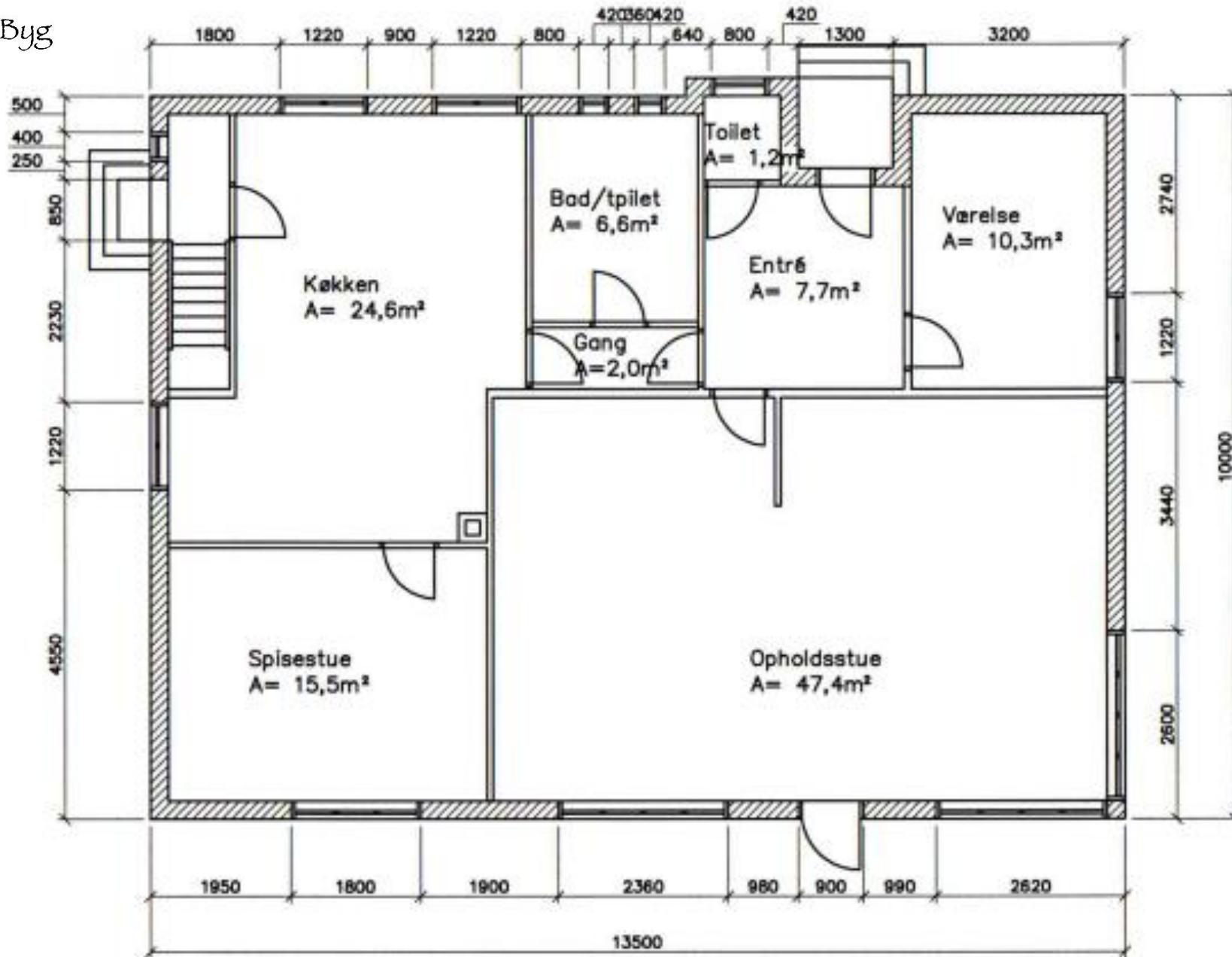
Gavl mod øst



Facade mod syd

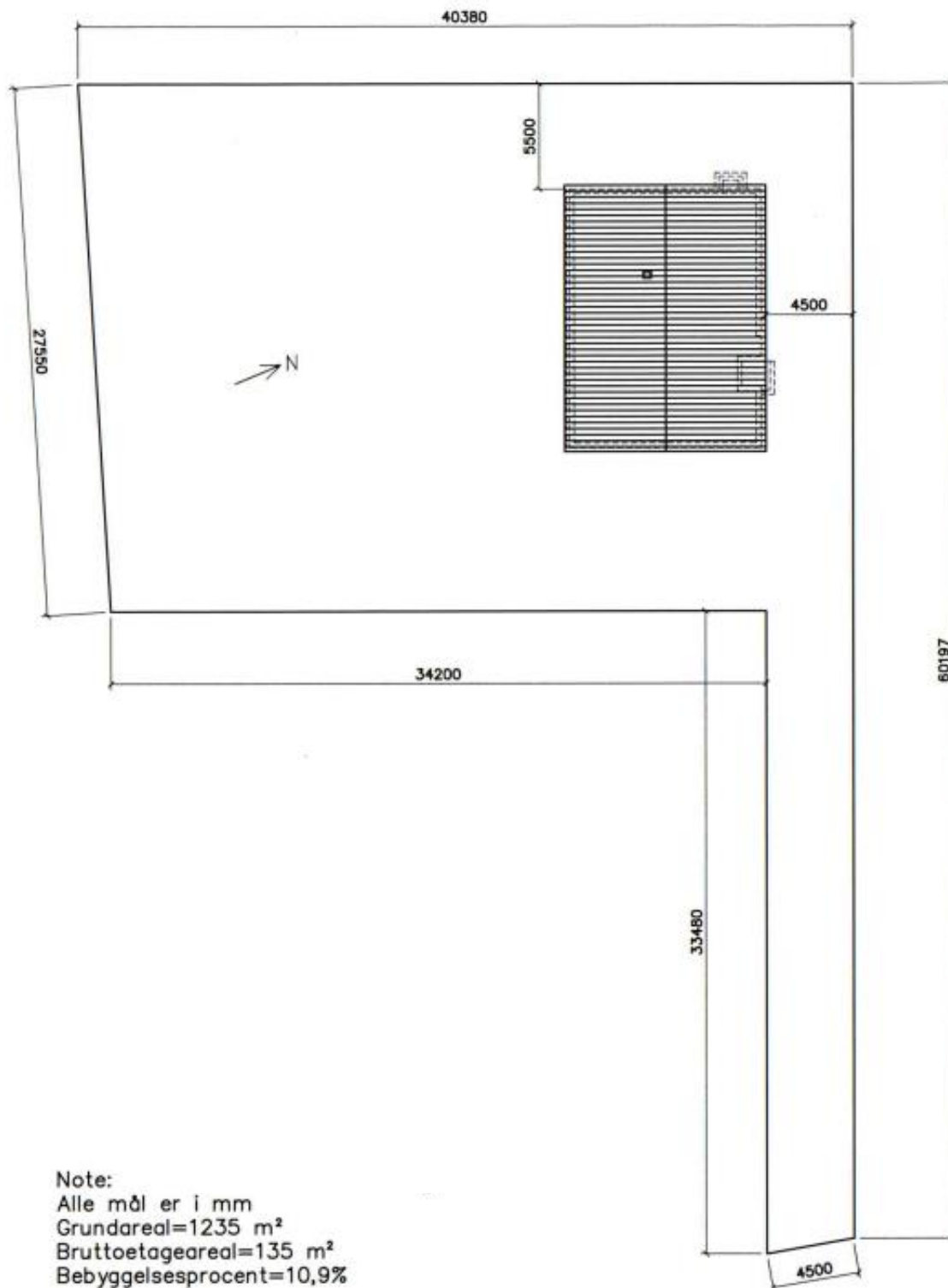


Gavl mod vest



Stueplan

Eksisterende forhold
 Kastanievej, Holte



Note:
Alle mål er i mm
Grundareal=1235 m²
Bruttoetageareal=135 m²
Bebyggelsesprocent=10,9%

Situationsplan
Eksisterende forhold
Kastanievej, Holte